



Climate Fires

Mary Waltham

Climate fires affect every continent on the planet. Warmer, drier conditions cause longer still fire seasons in parts of the world where wildfires are familiar and, where they are not. In addition, the intensity and size of fires is increasing, damaging and often destroying all plant and animal communities in the path of the fire.

'Climate Fires' is a body of work reflecting on wildfires. What remains after the fires? Just ashes, more ashes and bare soil. As forests burn, they release carbon dioxide and other global warming gases, amplifying the climate crisis as emissions increase. Subsequent rainfall washes away topsoil and alters the landscape irreversibly as the land is no longer able to support plant and animal communities. Re-establishing functional ecosystems of any sort requires redevelopment of soil and that takes time. A long time.

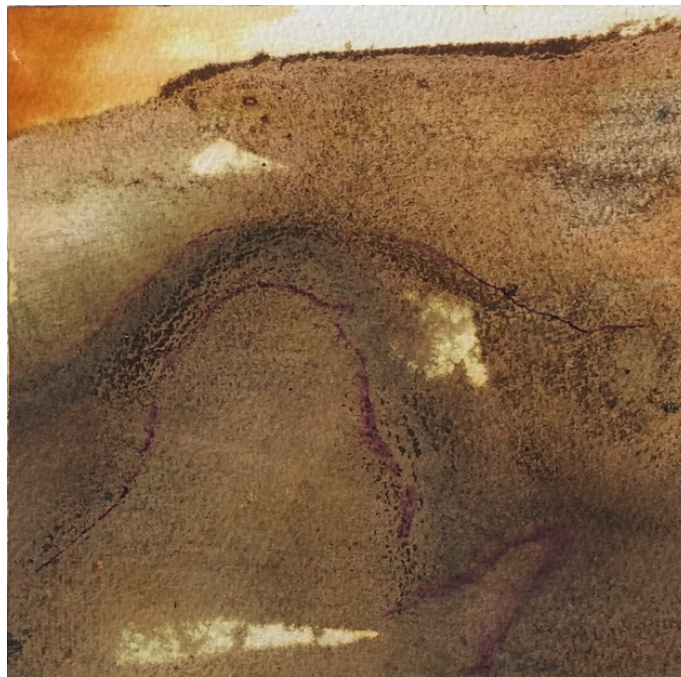
Mary Waltham

Climate fires is a series of nine watercolor paintings each 6" x 6" (15.2cm x 15.2cm), mounted on cradled birch panel. These are a direct response to the wildfires prevalent in the Western United States.

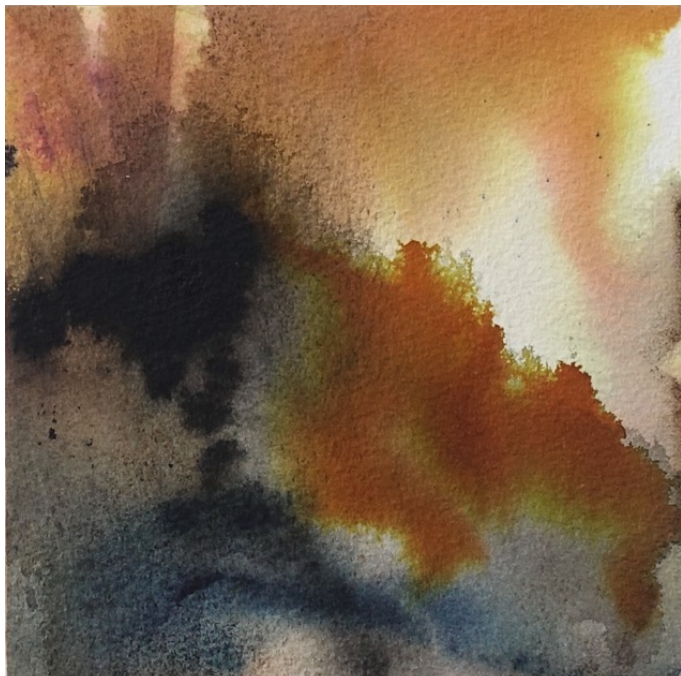
Such images can be interpreted as visions of the same landscapes in Australia, Siberia, the Amazon, Sweden, Spain and elsewhere.













Climate Fires

Installation view, watercolor mounted on cradled birch panels
Nine paintings each 6" x 6" (15cm x15cm)

Ashes to ashes, a studio-based installation, brings the viewer closer to the materiality of ashes and charred wood that are all that remains after climate fires.









Ashes to ashes
Studio installation
Charred wood and ashes

Lost landscapes is a series of paintings using watercolor paints and ashes to explore the landscapes that are destroyed by fires all over the world. Incorporating ashes into the painting is intended as a direct method of expressing the landscapes that are lost through fire.



Lost Landscape 5
Watercolor and ashes
18" x 18" (46cm x 46cm)



Lost Landscape 3
Watercolor and ashes
18" x 18" (46cm x 46cm)

Lost Landscape 6
Installation view
Watercolor and ashes
on cradled birch panel
6" x 6" (15cm x 15cm)





Lost Landscape 2
Watercolor, pencil and ashes
6" x 6" (15cm x 15cm)



Lost Landscape 1
Watercolor and ashes
18" x 18" (46cm x 46cm)

LAYOUT DESIGN BY MEGAN REID
megan_reid_@hotmail.co.uk

Printed by TreloarPrint
print@treloar.org.uk
www.treloarprint.org.uk