



Collateral damage: Fracking the fossil record

Mary Waltham
www.MaryWaltham.com

Collateral damage is a series of prints, paintings and drawings based on the geology of Marcellus shale of the North Eastern US, and the fossil record embedded in it.

- Marcellus shale dates from 400 million years ago (mya) and is deep below the ground we walk on.
- Fracking (hydraulic fracturing) of this dark fragile sediment yields commercial quantities of gas that is mined extensively across Pennsylvania and beyond.
- Shale was formed from deposits of organic matter in the deep seas that covered the Earth. It is rich in fossils. When fracking occurs the fossils are destroyed.



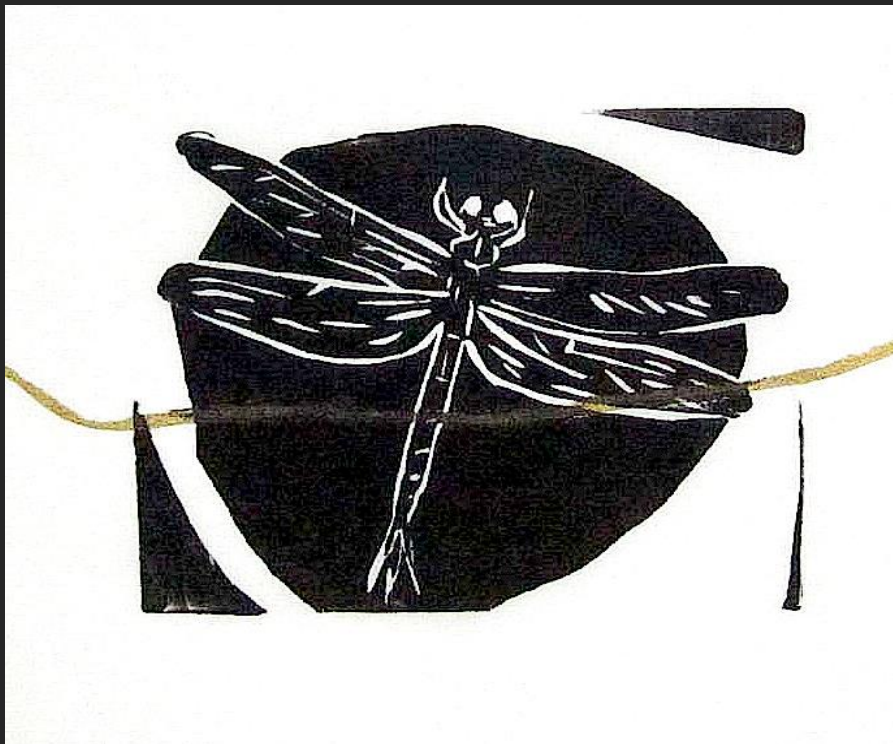
Fracking: Marcellus shale
Collage
20" x 30" (51cm x 76cm)



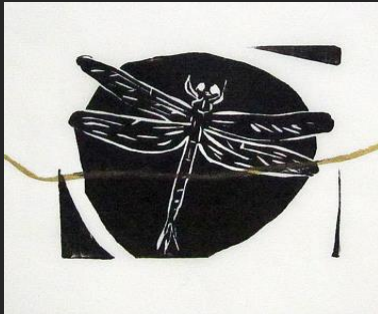
Diplacantha sp., 400 mya
Lino-print with chine colle
3" x 5" (8cm x 13cm)



Worthenia sp., 318 mya
Lino-print with chine colle
3" x 5" (8cm x13cm)

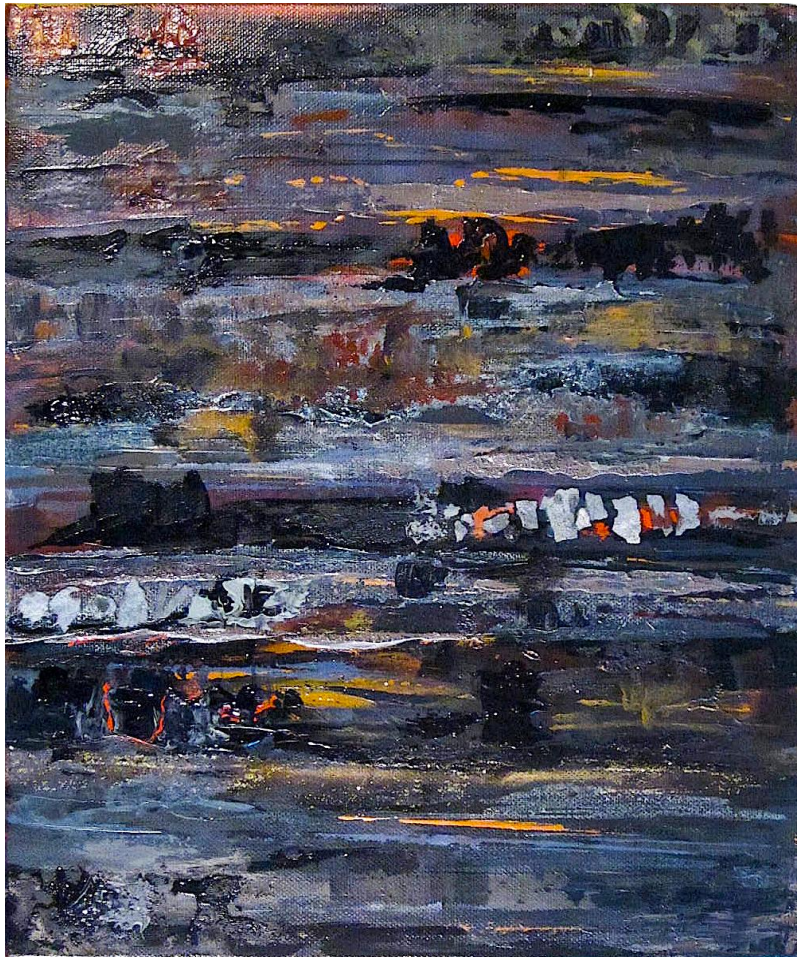


Meganeuridae sp., 320 mya
wingspan to 65cm (26")
Lino-print with chine colle
4" x 5" (10cm x 13cm)





Archaeopteris sp., 370 mya
To 40 m in height
Woodcut print on paper
6" x 6" (15cm x 15cm)



Marcellus shale I (2017)
Mixed media on canvas
14" x 11" (35.5cm x 28cm)



Marcellus shale II (2017)
Mixed media on canvas
14" x 11" (35.5cm x 28cm)



Marcellus shale III (2017)
Mixed media on canvas
12"x 4" (30cm x 10cm)



Marcellus shale IV (2017)
Mixed media on canvas
12" x 24" (30.5cm x 61cm)



Marcellus shale IV (2017) Detail
Mixed media on canvas



Marcellus shale V (2017)
Mixed media on canvas
20" x 16" (51cm x 40.5cm)



Paleozygopleura sp., 375 mya
Graphite on recycled slate roof tile
10" x 12" (25cm x 31cm)



Hylolithes sp., 420 mya
Ice cream cone shaped brachiopod
Pastel on paint on recycled slate roof
tile. 8" x 12" (20cm x 30cm)



Goniatites vanuxem, 390 mya
First found in Marcellus shale
Chalk and graphite on recycled
Slate tile. 9"x 14" (23cm x 36cm)



Grammysia sp., 390 mya
Bivalve mollusc
Chalk and graphite on recycled slate roof tile
8" x 14" (20cm x 36cm)



Crinoid sp., 425 mya

Related to starfish; crinoids had 'stems' of 40m (130ft)

Chalk and graphite on recycled slate roof tile

12" x 18" (30cm x 46cm)

Devonian fishes, 390 mya

The Devonian is often described as the era of fishes
Chalk and graphite on recycled slate roof tile
20" x 12" (51cm x 31cm)



Printed by TreloarPrint
print@treloar.org.uk
www.treloarprint.org.uk